

## 1. Switch On

Turn on the device by pressing the Power Button 2s. The thermal imager is started, the indicator turns on, the boot screen appears on the eyeshade, and then the main interface is displayed.

## 2. Switch Off

The thermal imager will be switched off by holding the Power Button and release the button when the countdown icon changes from 3 to 0. The current state will be saved automatically after shutdown.

## 3. Standby Mode

When the device is on, short press the Power Button to enter the standby mode with indicator light flickering green. Short press the Power Button again to wake up the device from the standby mode to the normal working state.

## 4. Eyepiece Adjustment

The eyepiece adjustment can help user to get the clearest image for users with different degrees of myopia.

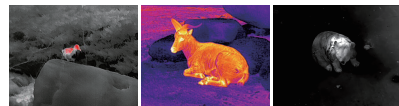
## 5. Switch the Image Mode

Short press the Image Mode Button to switch the image mode from white hot, black hot, red hot, pseudo color, target highlight mode circularly.



White Hot

Black Hot



Red Hot

Pseudo Color

Highlight

## 6. LED Lighting

When the device is off, short press the Image Mode Button. You can turn on/off the LED indicator.

## 7. E-Zoom

Short press the E-Zoom Button for image zooming from 1x / 2x / 4x circularly.

×2/×4

## 8. Stadiametric Rangefinder

Long press the E-zoom and Image Mode Button to turn the Stadiametric Rangefinder mode on/off. Then by short or long pressing the Image Mode Button or Photo Button to adjust the selecting rang of the target.

The distance of human(1.7m target), wild boar (0.9m target) and hare (0.2m target) can be measured and displayed on the left the corresponding icon.



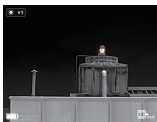
## 9. Photo / video

In the normal display mode, short press the Photo Button to take photos and long-pressing for video recording. A video time prompt box appears in the upper-right corner. Long press again to quit and save the video.

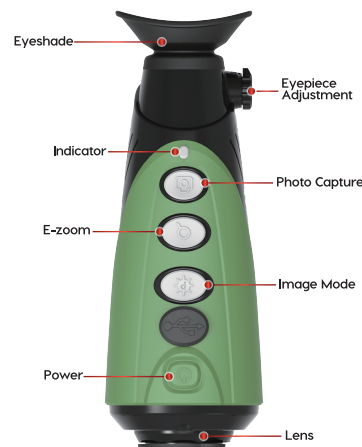


## 10. HotSpot Tracking

Long press the Image Mode Button and Photo Button simultaneously to start hotspot tracking function and the hottest objects on the screen can be tracked.



## Components & Controls



## 11. Setting Menu

Long press the E-Zoom Button to enter the menu, then short press the Image Mode Button or the Photo Button to switch up and down. And short press the E-Zoom Button to perform following settings: Wi-Fi / display brightness / video output / calibration mode / PIP / auto standby / cursor calibration and more. When done, long press the E-Zoom Button to exit the menu.



## 12. Wi-Fi

Turn on Wi-Fi in the menu, and connect to the Wi-Fi on your phone. The Wi-Fi names Eye\_XXXXX-XXXXXX, XXXXX-XXXXXX is the SN code of the device, and the password is 12345678. After the Wi-Fi connection is successful, the APP installed on the phone can be used for real-time operations, such as taking photos and recording videos.

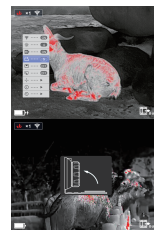
## 13. Video Output

Turn on the analog video in the menu, and a video output icon will appear on the lower-right corner of the image. The analog video can be output to the monitor with the specific video transmission cable via the USB interface.

## 14. Calibration Mode

The image degrading can be improved by manual correction. The manual calibration has B (background) and S (shutter) modes to be switched through the menu.

Press and hold down the E-Zoom and Photo Button at the same time to achieve the manual correction. In B mode, cover the camera with a lens cap during calibration, and then remove the lens cap after calibration.



## 15. Picture in Picture (PIP)

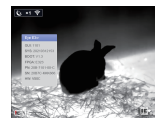
After the PIP is enabled in the Menu, an independent window is displayed in the center on the top of the screen, showing the 2x zoomed-in image of the central area of the current image.



## 16. Automatic Standby

When the standby function is on, if there is no operation within 15 minutes, the device will switch to standby mode. Automatically power off after 15 minutes in the standby state.

**Note: When Wi-Fi, recording or video output function is turned on, it will not automatically stand by.**



## 17. System Information

Short press the E-Zoom Button to enter the system information interface, under which user can check all version information and product code.

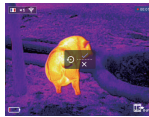
## 18. Factory Reset

Short press the E-Zoom Button for factory reset. Select ✓ (Yes) or × (No) with a short press of the Image Mode Button or Photo Button. Press the E-Zoom Button briefly to

confirm your selection.

If Yes is selected, the following settings will be restored to the factory state:

Image Mode - white hot mode,  
Brightness - level 2,  
E-zoom - x1,  
Calibration Mode - S,  
and the other functions are off.



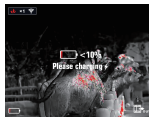
**Note:** Restore factory settings will format memory, so please save the data in advance.

### 19. Data Catching

After the device is connected to a computer through a USB cable, you can open the device memory on the computer and read the stored photos and videos.

### 20. Charging

When the indicator light is flashing red, it means the battery is less than 10%. Please charge the device in time. At the same time, there will be relevant text prompts on the screen.



Open the USB cover at the bottom, plug in the USB charging cable, and connect with the power to charge, or use a portable power source to charge the device.

During charging, the indicator is yellow. When it turns green, the charging is completed.

### Model

Eye Series	C2w	E3w
Detector Resolution, pixels	256×192	384×288
Pixel Size, μm	12	17
NETD, mK	≤40	
Frame Rate, Hz	25	50
Objective Lens, mm	13	19
Field of View	13.5°×10.1°	19.5°×14.7°
Display Resolution, pixels	720×540 LCOS	
E-zoom, x	×2	×2/×4
Recorder, G	16	
Max. Battery Life <sup>※</sup> , h	12	7
Weight, g	<420	
Dimension, mm	160×62×62	
Detection Range, m (Target size:1.7m×0.5m, P(n)=99%)	675	696

※ Actual operation time depends on the intensity of Wi-Fi use and the built-in video recorder.

※ Technical parameters of the device may be improved without prior notice of the customer.

### Attention

1. The rated charging voltage of this product is 5V, please charge timely when power is low, so as to avoid the service life loss caused by battery over-discharge.

2. The thermal imager is not recommended to use in high-temperature environment for a long time, if the temperature is too high, the imager will enter the high-temperature protection state, and automatically shut down.

3. The use of temperature is recommended at -10°C to +50°C. Otherwise, the service life of the product will be affected.

4. Make sure that the USB port cover of the thermal imager is tightly plugged firstly when using in water environment, such as rainy days.

5. Under any circumstances (whether on or off), do not expose the thermal imager directly into the high-intensity radiation sources (such as the sun, laser, etc.), to avoid irreversible damage to the device.

6. The B correction mode will reduce the frequency of automatic shutter correction after the condition of the device become stable. If the image gets worse, please cover the lens cover for manual background correction.

7. When the device is not used for a long time, it should be charged at least 2 months during storage and stored in a dry and ventilated environment.

8. Do not shine the laser pointer on human eyes.

9. Do not be charged in an environment above 40°C.



InfiRay Outdoor

## Eye Series E3w C2w Thermal Monocular

### Quick Start Guide



InfiRay



IRay Technology Co., Ltd.

Tel: 0086-400-998-3088

Web: www.infirayoutdoor.com

Email: infirayoutdoor@infiray.com

Add: 11th Guiyang Street, YEDA, YanTai 264006, P.R. China